

For any product you want more information on, simply note the enquiry number that is shown and fill out the reader enquiry card. Your enquiry will be dealt with quickly to help you and your business...

BEST PRODUCTS OF 2016

A mighty defence against skin damage

Big Wipes Hand Cream, with its powerful combination of urea and alpha hydroxyl acids, is a high performance treatment cream that rapidly relieves dry and rough skin, helps strengthen the skin's barrier function and improves its ability to absorb and hold moisture.

It is non-greasy and alcohol and fragrance free, and is recommended by dermatologists to increase moisture concentration and improve skin texture, appearance and function. Big Wipes Hand Cream helps restore the skin's smoothness, softness and flexibility by helping the skin retain moisture. In conjunction with Big Wipes 4x4 hand-cleaning wipes, Big Wipes Hand Cream keeps your skin in tip-top condition, so you can get on with the job in hand.

www.bigwipes.com

enquiry number 905



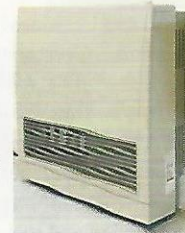
A gas-fired range of space heaters

Rinnai has launched the Energysaver 559FT and is offering a new streamlined look for the Energysaver 309FT. Sporting a modern, sleek casing, the heaters simply blend into the background in line with modern demands for modern interior aesthetics, while offering exceptionally high efficiencies in operation and reduced running costs. Changes have been made to the operation board, which is now an easy to use touch control pad sited conveniently and discreetly on top of the appliance.

The unit is also supplied with a child lock and the timer function and eco mode combined with the new unit's ability to heat spaces fast. The 559FT has an input of 6.4kW and output of 5.2kW. The streamlined unit measures 554mm x 750mm x 250mm. The Rinnai Energysaver 309FT, like the 559FT, sports a similar sleek casing and turns in net efficiencies of 88%.

It has an input of 3.4kW and output of 2.92kW. The streamlined unit measures 695mm x 465mm x 257mm. Natural Gas usage has been pegged at 0.31m³ while LPG consumption is 0.26kg/hr.

www.rinnaiuk.com



enquiry number 906

Kingspan Titan extends oil tank range

Kingspan Titan has launched the latest addition to its slimline oil tank portfolio. The ESS1000 has a total footprint of only 1.152m² and offers safe and secure heating oil storage at premises where space is limited and access restrictions may apply. Titan EcoSafe tanks are renowned for their robust construction and durability, which together with the integrated bund, helps safeguard oil supplies and prevents oil spills or ground contamination. Along with these attributes, the tanks also feature lockable lids for extra security. The Titan ECOSafe slimline range all include the Watchman Alarm oil level monitor. Any sudden drop in oil levels will trigger an alarm, and supplies can be replenished in good time thanks to the system's low level alert feature.

www.kingspantitan.com

enquiry number 907



Cloudfm to offer 10-year warranty on Mitsubishi Electric equipment

In yet another first for the facilities management provider, Cloudfm has launched a 10-year warranty on all Mitsubishi Electric equipment. The move comes after the company was awarded BSP (Business Solutions Partner) status with the manufacturer which enables it to offer an extended 7-year warranty. Cloudfm will underwrite a further 3-year warranty on all new equipment and parts. Cloudfm's client base includes some of the best known retail and restaurant brands, such as KFC, Pizza Express, ASK, Zizzi, Wolseley, Warehouse, Karen Millen, Coast and Oasis. "Cloudfm has built its reputation on delivering the best possible service to its customers and this total commitment to excellence matches the quality of delivery that we as a manufacturer expect", commented Deane Flint, Sales Director for Mitsubishi Electric. "The promise to add this extension to the warranty reinforces that approach and is also a clear demonstration of Cloudfm's ability to ensure that our products deliver maximum performance for customers throughout their working life."

The resilience of Cloudfm's innovative approach is based on:

- Proactive monthly maintenance visits
- Full visibility of every engineer across the supply chain
- The unique use of QR code technology to monitor all activity on site

To find our more visit www.cloudfmgroup.com



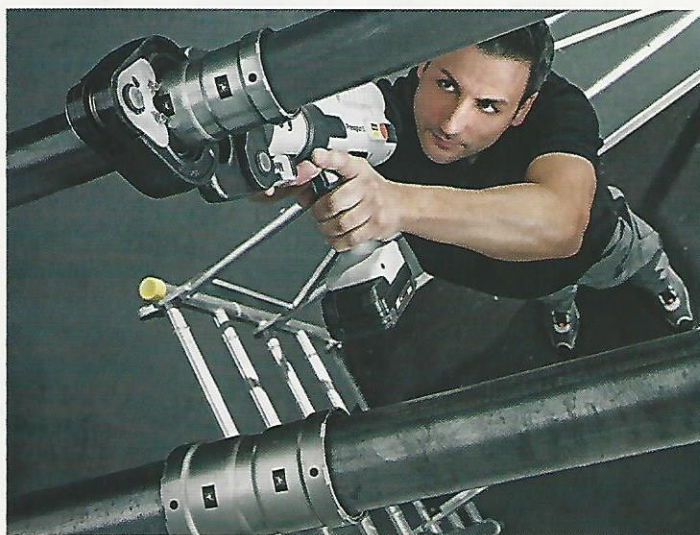
enquiry number 908

Press thick-walled steel pipes quickly and securely

Viega has introduced the innovative Megapress to the UK market. The carbon steel press fitting system offers a fast, effective alternative to traditional methods such as welding. A highly effective pressing method, Megapress connections can be made in less than seven seconds – helping to achieve a 60% reduction in installation time.

Compatible with heating and cooling systems, the Viega Megapress system is an effective tool for pressing pipework. This achieves a cleaner and safer method of connection and avoids the need for oils, heavy threading equipment or open flames. The simple to use pressing tool means that even difficult installations such as overhead pipework can be completed safely and effectively. The Megapress connectors feature a special profile-sealing element that encompasses the pipe in three places at the same time, guaranteeing a leak-proof connection. This seal makes it possible to press seamless, welded, galvanised, industrially varnished epoxy resin-coated and black steel pipes with one and the same connector and crucially, does not compromise the integrity of the pipe.

The pressing tool is supplied in a practical case, which includes three press jaws ($\frac{1}{2}$ ", $\frac{3}{8}$ " and 1"), three press rings for nominal widths of $1\frac{1}{4}$ " to 2" and hinged press jaws, to carry out press connections in restricted spaces. Visit www.viega.co.uk



enquiry number 909

So powerful, they need a cage

The new Big Wipes Cage holds any Big Wipes 80s tub, the one litre Big Wipes Power Spray and the one litre Big Wipes Power Gel firmly and securely. It fixes easily into ply panelling or into a bespoke racking system in vans and is wall mountable for the workshop, or near the sink for the Power Gel. Made from tough high quality polycarbonate, the Cage comes with pre-drilled holes for screw fixing. Once installed, the cage allows Big Wipes 4x4, Power Spray and Power Gel to be accessed with just one hand for those very messy jobs. Big Wipes 4x4 wipes and Power Spray contain four powerful cleaning agents and four dermatologically tested skin conditioners to quickly shift all modern

construction sealants, adhesives, paints, coatings and grime in an instant.

www.bigwipes.com



enquiry number 910

Croydex Flush and Fill kits offer an easy way to improve performance and save water

Croydex has expanded into the plumbing fittings markets with a range of performance enhancing toilet flush and fill kits. Designed to provide the easiest way to fully upgrade to the best toilet valves available or to replace worn or broken parts, the fully-adjustable flush and fill kits are designed for easy installation, long-lasting performance, quiet and powerful operation, and combined water-saving capability. The products are WRAS approved and come with a five year guarantee. They are part of Croydex's expanded homeware collection, which also includes adapters for converting conventional pop-up and chain plugs to a modern click waste.

To request a copy of the Croydex catalogue call 01264 365881 or visit www.croydex.com



enquiry number 912

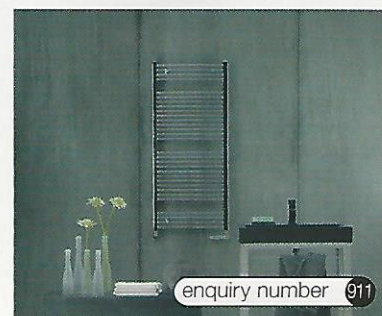
Zehnder re-launches range of radiators and towel warmers

Zehnder has re-launched its Chatsworth Heating brand as Zehnder Professional Radiators and Towel Warmers, a hand-picked range of products specially aimed at installers.

So what's new? The Zehnder Aura Towel Radiators in both straight and curved versions replace the Chatsworth ladder rails, offering a higher output, and are available in a wide range of stocked sizes in both chrome and white.

There are also two new Chrome Thermostatic Valve Sets, which offer great value at £59 per set, and a new finish for the Zehnder Charleston multi-column radiators.

For more information visit www.zehnder.co.uk

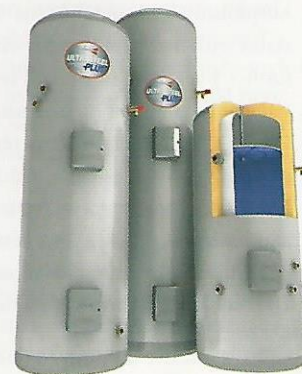


enquiry number 911

Kingspan product technology puts Albion Ultrasteel Plus ahead of the curve

New built-in thermal expansion technology means that the Kingspan Environmental's popular mainstream unvented cylinder range, Albion Ultrasteel Plus, now provides 14% more usable hot water than other standard unvented cylinders that use external expansion vessels. The new V40 test designed to quantify the amount of usable hot water a cylinder produces in normal conditions, is now an essential part of BS EN 12897:2016 standard. The V40 test defines usable hot water as the volume of water that can be drawn from the cylinder at 40deg C.

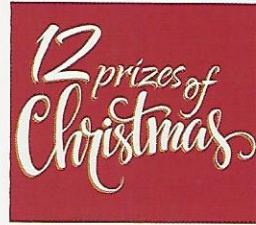
For installers, doing away with the external expansion vessel reduces the job time by around 20 minutes per cylinder. See more about Albion Ultrasteel Plus by visiting <https://goo.gl/J0a4Gu>



enquiry number 913

Heating & Plumbing Monthly

BRITAIN'S LEADING INSTALLER MAGAZINE

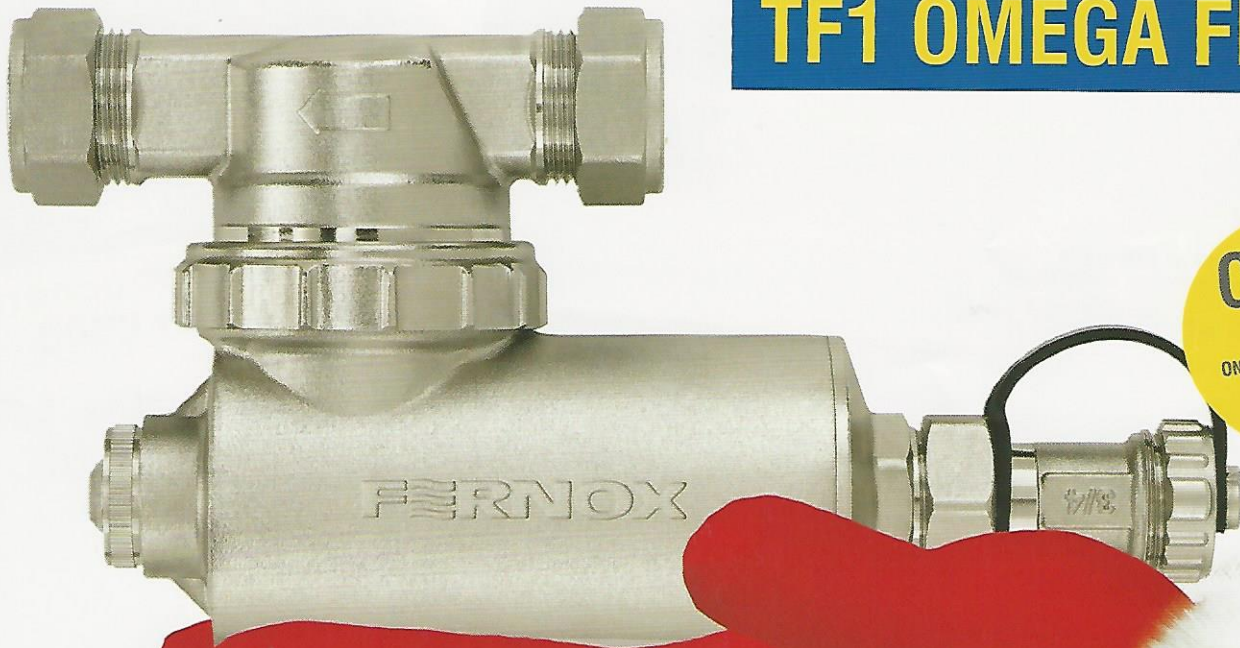


Feeling lucky? - p2-3
Your chance to win great goodies in HPM's biggest competition of the year



Economies of scale - p22
HHIC discusses the ErP regulations likely to be introduced in the years ahead

UNWRAPPING THE FERNOX TF1 OMEGA FILTER



OPEN ON PAGE 14