

# TOOLS & TESTING DEVICES

## BOSCH 10.8V WIRELESS CHARGING

The wireless charging system from Bosch has been expanded to include the GBA 10.8 V 2.5 Ah OW-B Professional battery, which offers the benefits of inductive charging in the 10.8 V class for the first time. As with the 18V devices, tools using these batteries are charged whenever they are in contact with the wireless charging station, ensuring that they are ready for use at all times. The charging stations themselves are more robust than conventional chargers: since they no longer have any contact points, they are durable against water, dust and dirt. In addition to the stationary solution which can be mounted on workbenches, shelves or other work surfaces, the range also features mobile solutions such as the Wireless Charging L-Boxx Bay, which charges on the way to site.



**CIRCLE READERLINK 234**



## DICKIES LEWISTON

Recently introduced into its men's premium range is the two-tone Lewiston jacket. This power stretch softshell jacket is made from 94% polyester and 5% elastane and, with its tail back hem, it is designed to be worn outdoors. It comes in black with grey panels on its sides, inner arms and shoulders, with purple zip guards (including the zipped pockets) – which gives a modern look. Its two-way mechanical stretch, bonded fleece and elasticated binding at the cuff with internal hem adjusters are intended to offer amazing comfort.

**CIRCLE READERLINK 235**



## KIDDE FIREX ALARMS

To meet demands for sustainable, low-energy smoke and heat alarms, the latest Firex range provides lower maximum mains consumption, with substantial energy savings over previous models and significantly lower running costs. The alarms can be interlinked to create a low-energy network for protection throughout the home. But they can also interconnect with Kidde's 4MCO and 4MDCO mains-powered carbon monoxide alarms, using the 'Smart Interconnect' feature. All the alarms will sound when one is triggered, with different, distinct alarm sounder patterns for carbon monoxide or fire. This is supported by different display messages on the 4MDCO model, indicating 'Fire' or 'CO'.

**CIRCLE READERLINK 237**



## TOUGHBUILT ORGANISERS

The tooling accessories brand has introduced a range of holders and bags to keep you more organised in the field. The ToughBuilt iPad Organiser + Grid Notebook holds the iPad securely in place and covered with a non-scratch surface, while a heavy-duty notebook is perfect for taking notes by hand. Three external pockets have ample space for an iPad cable, earphones, pens and other personal items, while the organiser has a top handle, rear hand strap and d-rings so it can be used with a shoulder strap. The range also includes a version without the iPad storage facility. The ToughBuilt Laptop Bag is available in two sizes and features the brand's Rugged Hardbody construction, with thick padding to ensure the laptop stays safe. Finally, the ToughBuilt Smart Phone Pouch + Notebook & Pencil is a simple piece of kit with a steel clasp, enabling the pouch to clip on and off. It can be combined with any tool belt.

**CIRCLE READERLINK 238**



## FORGEFIX FORGEFAST

ForgeFix has developed a new range of screws described as having exceptional performance characteristics. In independent tests, the new screws are reported to have outperformed most other premium screws on the market in areas such as drive-speed, cam-out reduction, corrosion resistance, shear prevention and even environmental protection. They also benefit from ForgeFix's proprietary Elementech 400 coating, which has been salt spray tested to 400 hours. Elementech is free of CR6 (hexavalent chromium) which remains widely used as a coating despite being potentially toxic.

**CIRCLE READERLINK 236**

## BIG WIPES HAND CREAM

Dry skin and cracked, painful hands are a common ailment among the trade, but Big Wipes has come to the rescue with the launch of its specially formulated Hand Cream. With its combination of urea and alpha hydroxyl acids (AHAs), it is described as a high performance treatment cream that rapidly relieves dry and rough skin, helps strengthen the skin's barrier function and improves its ability to absorb and hold moisture. It is non-greasy and alcohol and fragrance free and is recommended by dermatologists to increase moisture concentration and improve skin texture, appearance and function.



**CIRCLE READERLINK 239**

FREE TO THE TRADE

PROFESSIONAL

# HEATING & PLUMBING

THE BUSINESS MAGAZINE FOR THE HEATING & PLUMBING INDUSTRY

INSTALLER

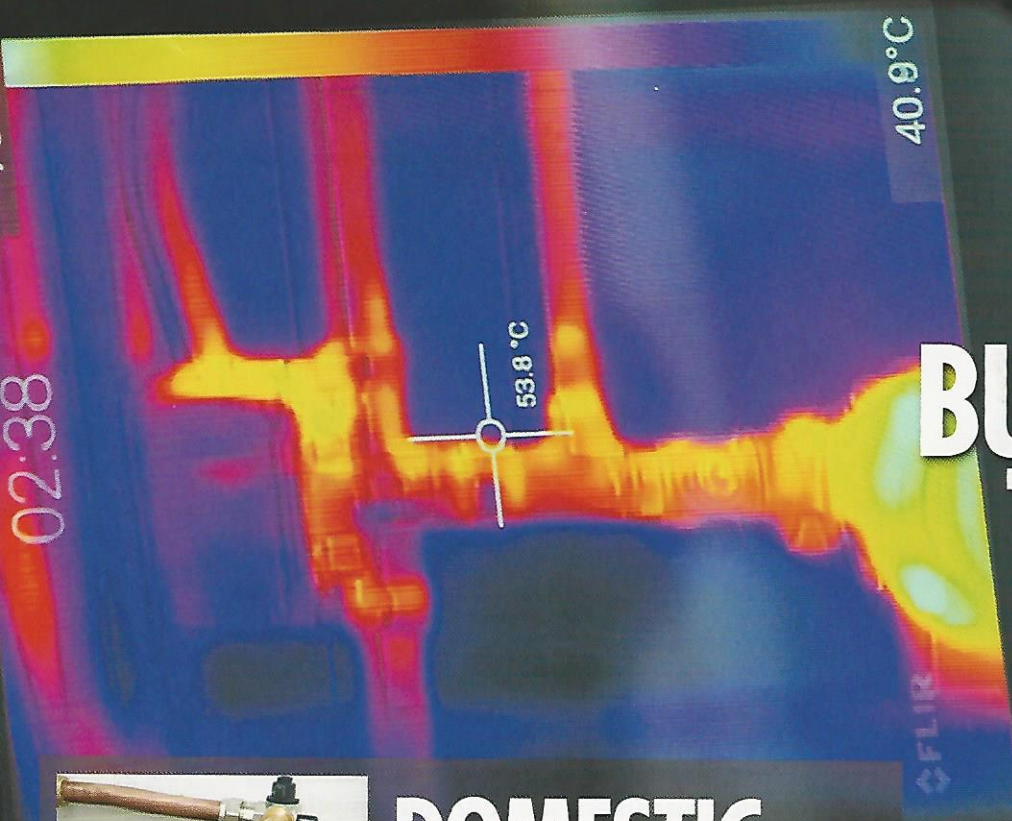
OCTOBER 2016

## TOOLS & TESTING DEVICES

ARE YOU **IMAGE CONSCIOUS?**

## BUSINESS & TRAINING

AGE IS JUST A NUMBER



## DOMESTIC BOILERS

THE KEY TO SYSTEM EFFICIENCY

VISIT [PHPIONLINE.CO.UK](http://PHPIONLINE.CO.UK) FOR REGULAR UPDATES AND EXCLUSIVE CONTENT